

CERTIFICATE OF LOCATION OF GOVERNMENT CORNER

EAST QUARTER Corner of Section 1, Township 105 N, Range 43 W, 5th P.M.

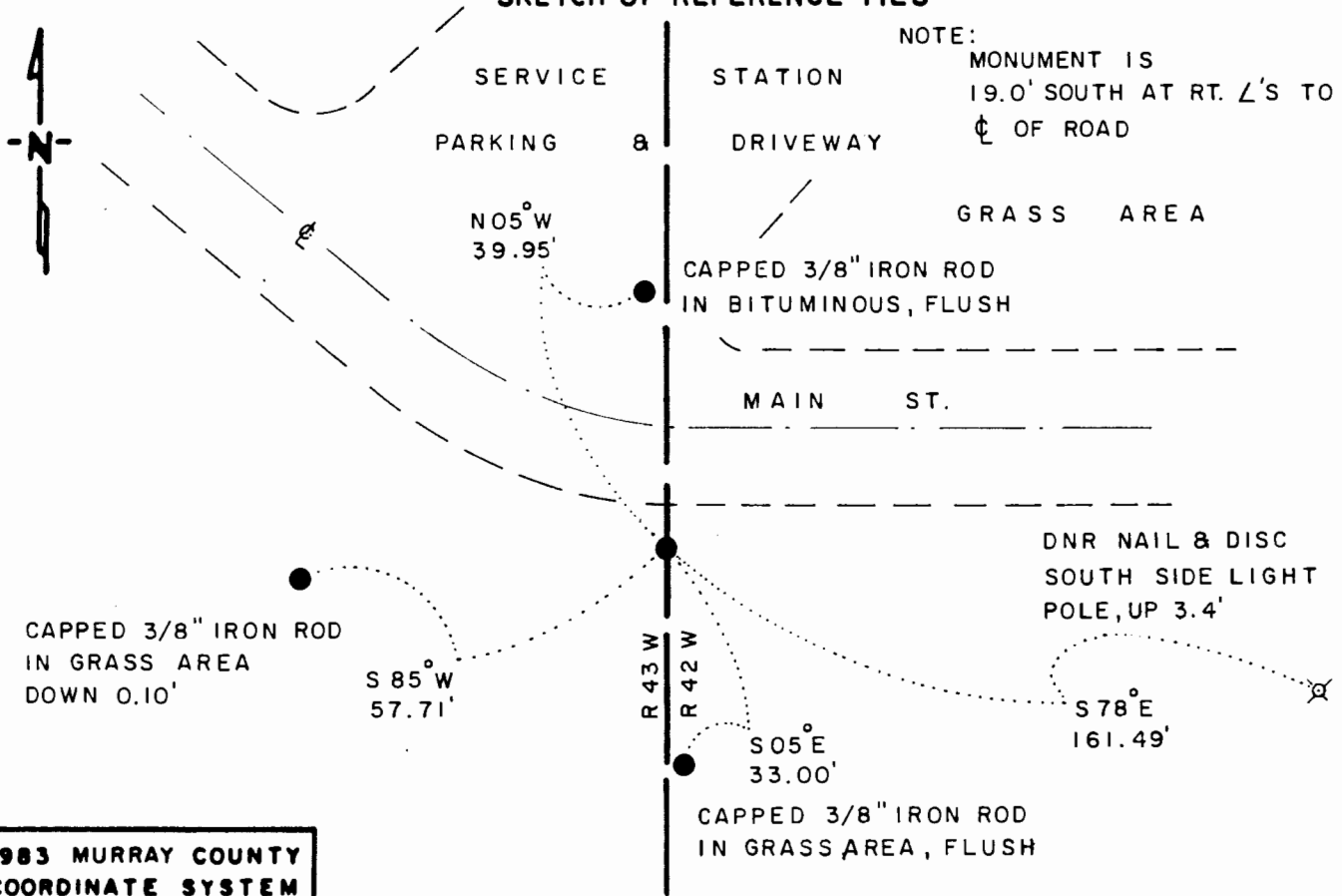
STATE OF MINNESOTA, County of MURRAY

At the corner location shown on the sketch

- On 7-24-91 found a 3/8" DIAMETER IRON ROD WITH PLASTIC
DATE CAP STAMPED RLS "12967, DOWN 0.10'
- left monument as found, lowered monument, removed monument (explain)
- On _____ placed a _____
DATE

SKETCH OF REFERENCE TIES

NOTE:
 MONUMENT IS
 19.0' SOUTH AT RT. \angle 'S TO
 ϕ OF ROAD



**1983 MURRAY COUNTY
 COORDINATE SYSTEM**
 N = 129,301.953
 E = 453,352.581

BEARINGS OBSERVED WITH COMPASS

Statement of evidence relative to this corner location is on back of page

J.B.M. 7-30-91
 WMA 12.00.00.01

I hereby certify that this document and the data contained herein was prepared by me or under my direct supervision.

Bruce W. Shpped 8-12-91
SIGNATURE DATE

Registration No. 17003
 Land Surveyor, Professional Engineer
 County Surveyor, County Engineer

OFFICE OF THE COUNTY RECORDER

County of MURRAY

I hereby certify that this document was filed in the Co. Recorders office at _____ M. on the _____ day of AUG 15 1991 A.D., 19__

County Recorder James V. Johnson

By _____, Deputy

DOCUMENT NO. _____

The DNR Bureau of Engineering contacted the following for survey information:

Mn Secretary of State's Office
Murray County Recorder's Office and Highway Engineer's Office
Mn/DOT Office in Willmar
Mn/DOT Office in St. Paul
Sioux Engineering of Windom
Sioux Engineering of Tyler
Madsen Land Surveying of Fairmont
Madsen Land Surveying of Worthington
Rieke Carroll Muller Associates of Gaylord

- 1861 U.S. General Land Office notes obtained from the Secretary of State's Office show the corner marked with a post and a charred stake in a mound of earth and sod with trench and pits as per instructions.
- 1900 Surveyor's Record Book A, page 101, obtained from the County Recorder's Office contains a survey by J. W. Woolstencraft. This survey is also contained in a Surveyor's Record Book obtained from the County Highway Engineer's Office. Survey shows corner but does not indicate what was found or set. Survey does show a stone at the center of Section 6.
- 1900 The plat of CHANDLER CEMETERY by J. W. Woolstencraft obtained from the County Recorder's Office shows the center of Section 6 and the sixteenth corner west of it 1320.0 feet apart. Plat does not indicate how the center of Section 6 was determined and a description of a monument at its location is not given.
- 1903 The plat of CHANDLER by J. W. Woolstencraft obtained from the County Recorder's office shows a post at corner but does not indicate if found or set. The corner is shown:
333.8 feet north of a point which is on the section line and the center line of railroad
- 1918 A right-of-way and track map for Chicago, Milwaukee and St. Paul Railway Company obtained from the Mn/DOT Office in St. Paul shows corner but a description of what was found or set is not given. The corner is shown:
2641.8 feet from the northeast corner of Section 12
333.8 feet north of a point which is on the section line and the center line of railroad
- 1946 A plan sheet for County State Aid Highway Number 4 obtained from the County Highway Engineer's Office shows a symbol for a monument at corner but does not indicate what was found or set. The corner is shown:
at Station 0+00
at the intersection of roads south and east
A symbol for a monument is also shown at the center of Section 6 but a description of what was found or set is not given. The center of Section 6 is shown to be:
at POT Station 24+91.2
in a 2 foot cut section

- 1953 DNR Bureau of Engineering used a location for corner but a description of what was found or set is not given.
- No Date A right-of-way map for State Trunk Highway Number 91 obtained from the Mn/DOT Office in St. Paul shows a symbol for corner but a description of what was found or set is not given. The corner is shown:
in line with the center line of roads east and south
- No Date A page in a Surveyor's Record Book obtained from the County Highway Engineer's Office shows a concrete stone and cement tile at corner but does not indicate if found or set. The following ties are shown to corner:
R.P. tack in corner fence post, southwest, 78.8 feet
R.P. tack in corner post, northwest, 62.8 feet
R.P. tack in telephone pole, northeast, 63.5 feet
- 1956 A page in a Surveyor's Record Book obtained from the County Highway Engineer's Office shows a concrete stone at the center of Section 6 but does not indicate if found or set.
- 1962 The plat of SMITH SUBDIVISION by Martin E. Koopman, County Surveyor, obtained from the County Recorder's Office shows a symbol for corner but does not indicate what was found or set.
- 1976 A page in a Surveyor's Record Book obtained from the County Highway Engineer's Office shows that the concrete stone at the center of Section 6 was found.
- 1978 A worksheet by Gary Martin, RLS #12967, obtained from Madsen Land Surveying shows that corner was established but a description of what method was used is not given. The corner is shown:
2625.23 feet from the northeast corner of Section 12
2622.05 feet from the northeast corner of Section 1
1.99 feet north and 16.45 feet east of the lost position
A description of what was set to mark corner is not given.
- 1978 County Highway Engineer's Office found a capped iron pin with RLS #12967 at corner. The following ties are shown to corner:
light pole, east-southeast, 135.12 feet
power pole, north-northwest, 63.95 feet
- 1981 September, field notes by Gary Martin, RLS #12967, obtained from Madsen Land Surveying show that a railroad spike was found at corner. A 1/2 inch rebar with a cap was reset for corner. The corner is shown:
18.4 feet southerly at right angles to the center line of CSAH #4
2632.98 feet from the northeast corner of Section 12
2614.02 feet from the northeast corner of Section 1
9.52 feet north and 10.52 feet east of the lost position
5324.18 feet from the west quarter corner of Section 1
2658.08 feet from an iron pipe found in the area of the center of Section 1
1.90 feet south of the easterly projection of a line from the west quarter corner of Section 1 through the iron pipe found in the area of the center of Section 1

1982 The plat of RAILROAD SUBDIVISION, CITY OF CHANDLER, MINNESOTA by Gary Martin, RLS #12967, obtained from the County Recorder's Office shows that a 1/2 inch iron reinforcing bar with plastic cap stamped RLS #12967 was set at corner. The corner is shown:

333.80 feet north of a point which is on the section line and the former center line of railroad

1991 July, DNR Bureau of Engineering found a 3/8" diameter iron rod with a plastic cap stamped RLS #12967 at corner. Searched for but found no evidence of the record ties and all physical evidence of the railroad grade has been removed. Did not excavate for record stone and tile because area has been disturbed for road construction. The iron rod was found to be:

2506.29 feet from an iron rod found in the area of the center of Section 6

2632.91 feet from the northeast corner of Section 12

2614.13 feet from the northeast corner of Section 1

The iron rod found in the area of the center of Section 6 was found to be:
11.0 feet north of a line between the east and west quarter corners of Section 6

18.6 feet west of a line between the north and south quarter corners of Section 6

Analysis of the above information led the DNR Bureau of Engineering to conclude that the found iron rod marks the location of the corner.